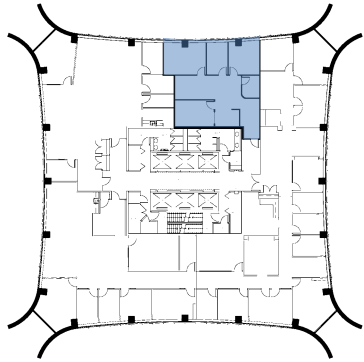
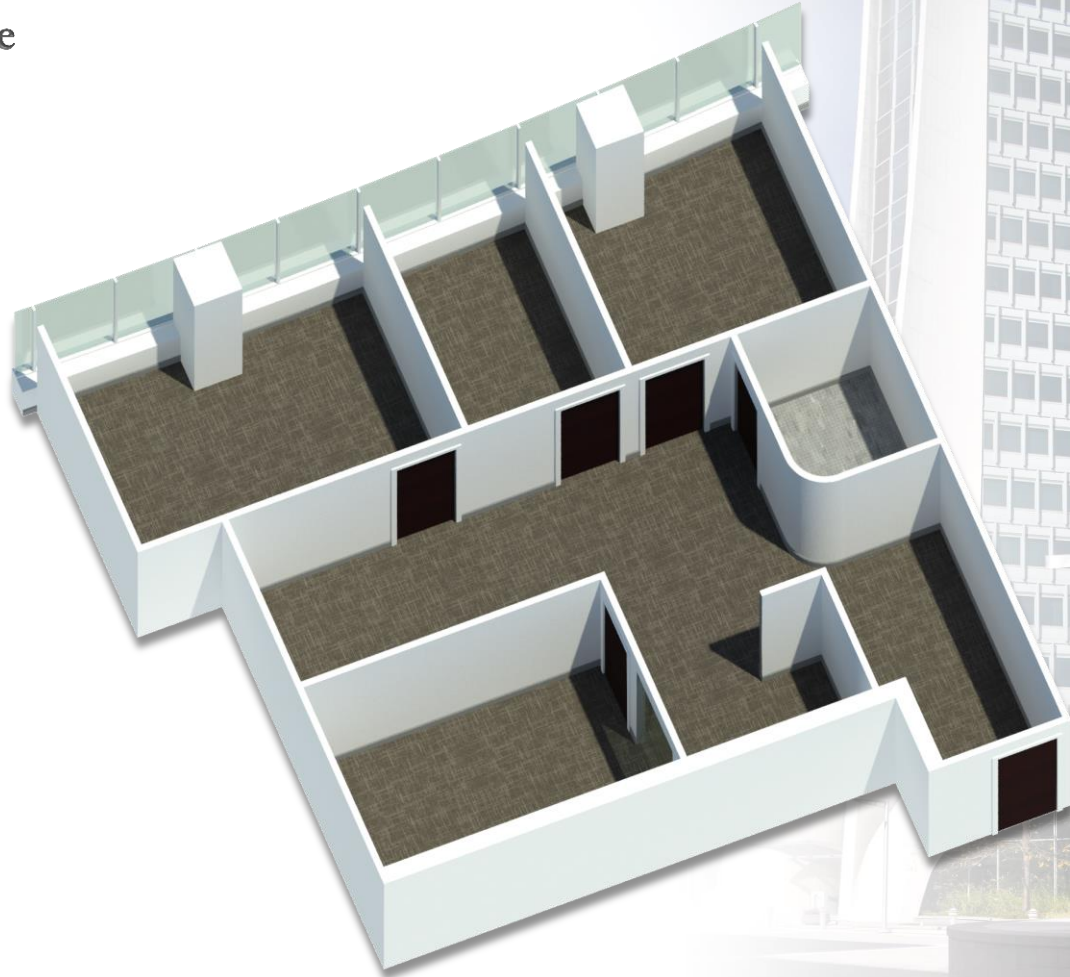


# 1 Landmark Square

5<sup>th</sup> Floor – 1,395 rsf

Stamford, CT



# RECKSON

A Division of  
**SL GREEN**  
REALTY CORP.

Demanding Quality. Delivering Value.

**Larry Kwiat, Senior Vice President Leasing** | 203-363-2341 | [larry.kwiat@slgreen.com](mailto:larry.kwiat@slgreen.com)

**Robert Swierbut, Vice President Leasing** | 914-872-4744 | [robert.swierbut@slgreen.com](mailto:robert.swierbut@slgreen.com)

**Willard Overlock, Vice President Leasing** | 914-872-4729 | [willard.overlock@slgreen.com](mailto:willard.overlock@slgreen.com)

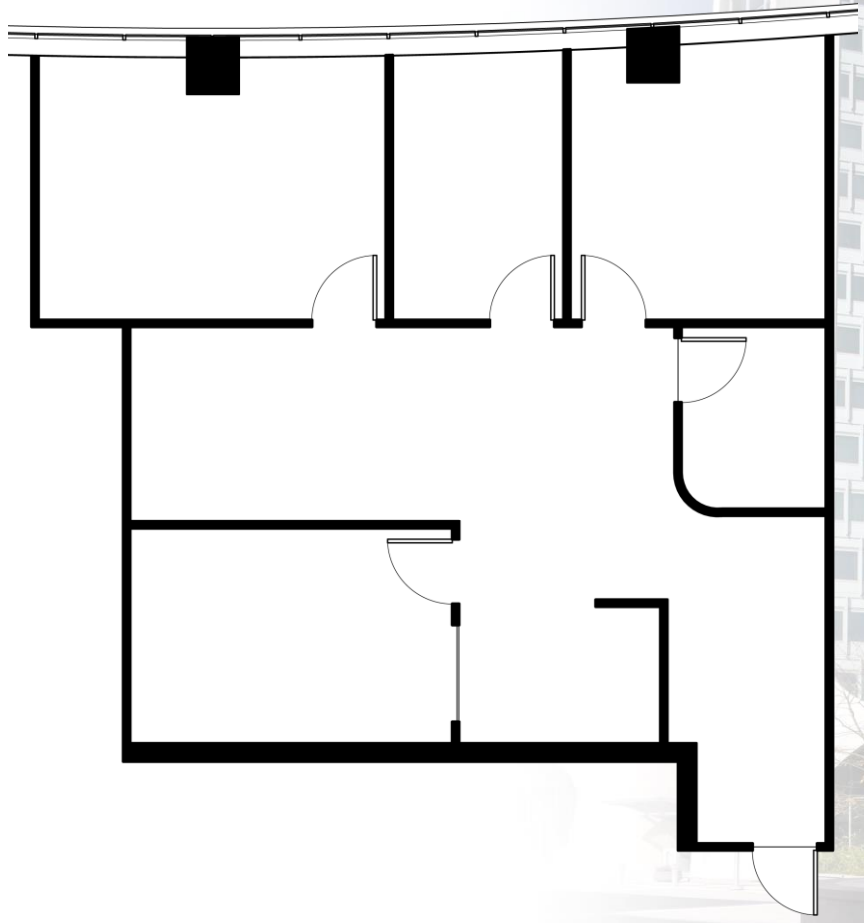
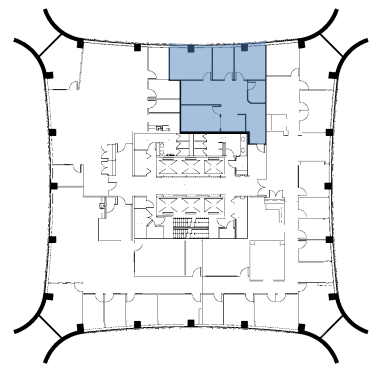
All information is from sources deemed reliable and submitted subject to errors, omissions, change of price, rental, prior sale and withdrawal without notice.

SLG  
LISTED  
NYSE

Member  
REBNY  
REAL ESTATE BROKERS ASSOCIATION

# 1 Landmark Square

5<sup>th</sup> Floor – 1,395 rsf  
Stamford, CT



# RECKSON

A Division of  
**SL GREEN**  
REALTY CORP.

Demanding Quality. Delivering Value.

**Larry Kwiat, Senior Vice President Leasing** | 203-363-2341 | [larry.kwiat@slgreen.com](mailto:larry.kwiat@slgreen.com)

**Robert Swierbut, Vice President Leasing** | 914-872-4744 | [robert.swierbut@slgreen.com](mailto:robert.swierbut@slgreen.com)

**Willard Overlock, Vice President Leasing** | 914-872-4729 | [willard.overlock@slgreen.com](mailto:willard.overlock@slgreen.com)

All information is from sources deemed reliable and submitted subject to errors, omissions, change of price, rental, prior sale and withdrawal without notice.

