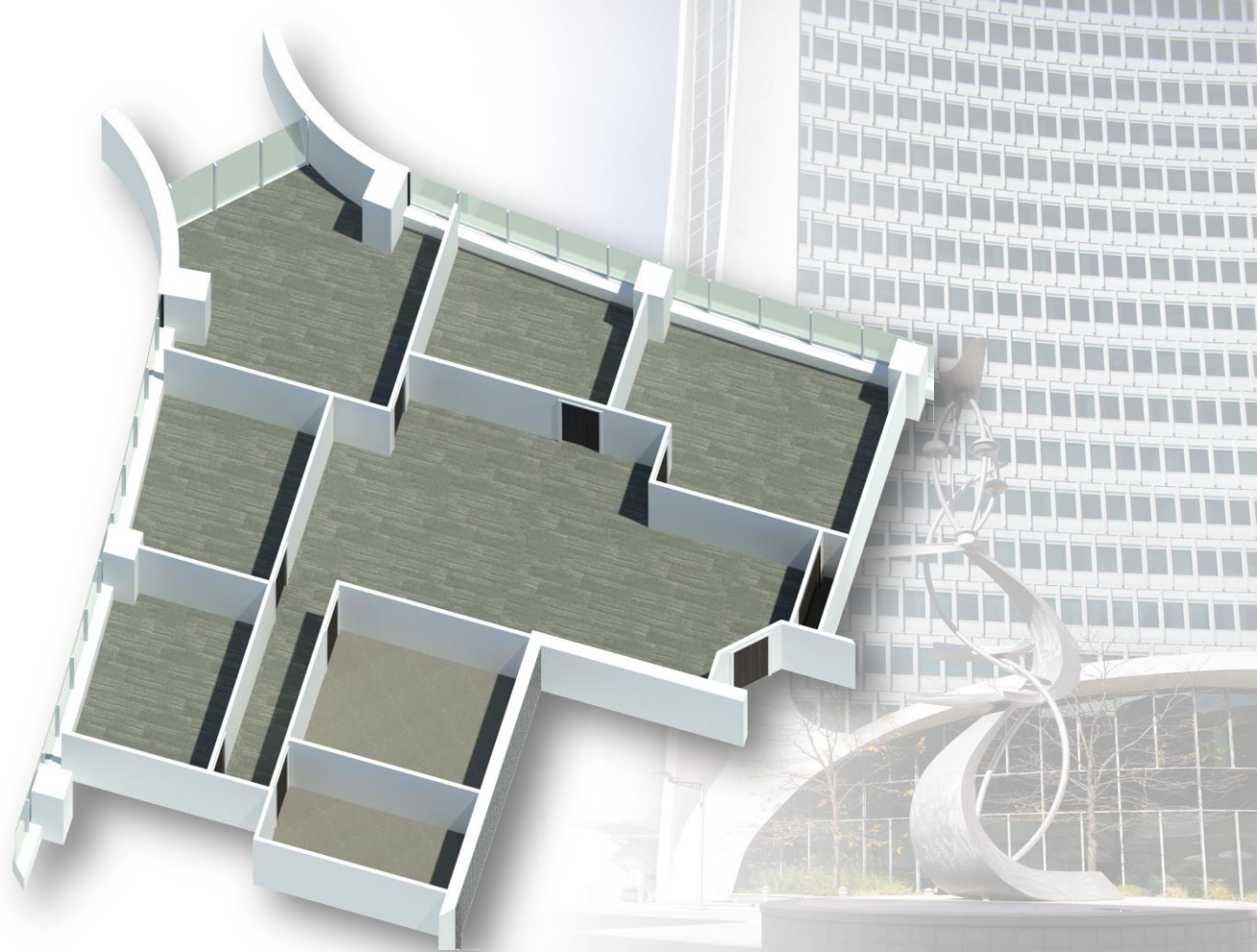
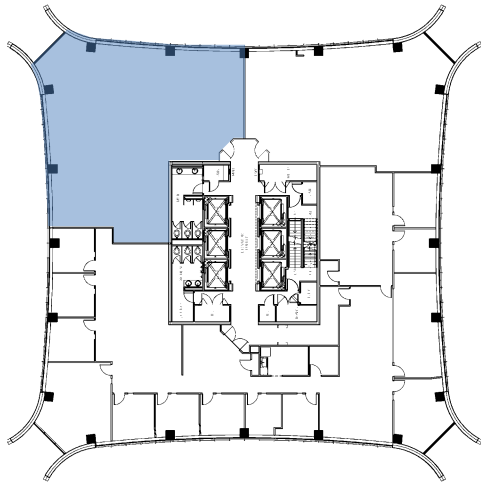


# 1 Landmark Square

9<sup>th</sup> Floor – 2,835 rsf

Stamford, CT



# RECKSON

A Division of  
**SL GREEN**  
REALTY CORP.

Demanding Quality. Delivering Value.

**Larry Kwiat, Senior Vice President Leasing** | 203-363-2341 | [larry.kwiat@slgreen.com](mailto:larry.kwiat@slgreen.com)

**Robert Swierbut, Vice President Leasing** | 914-872-4744 | [robert.swierbut@slgreen.com](mailto:robert.swierbut@slgreen.com)

**Willard Overlock, Vice President Leasing** | 914-872-4729 | [willard.overlock@slgreen.com](mailto:willard.overlock@slgreen.com)

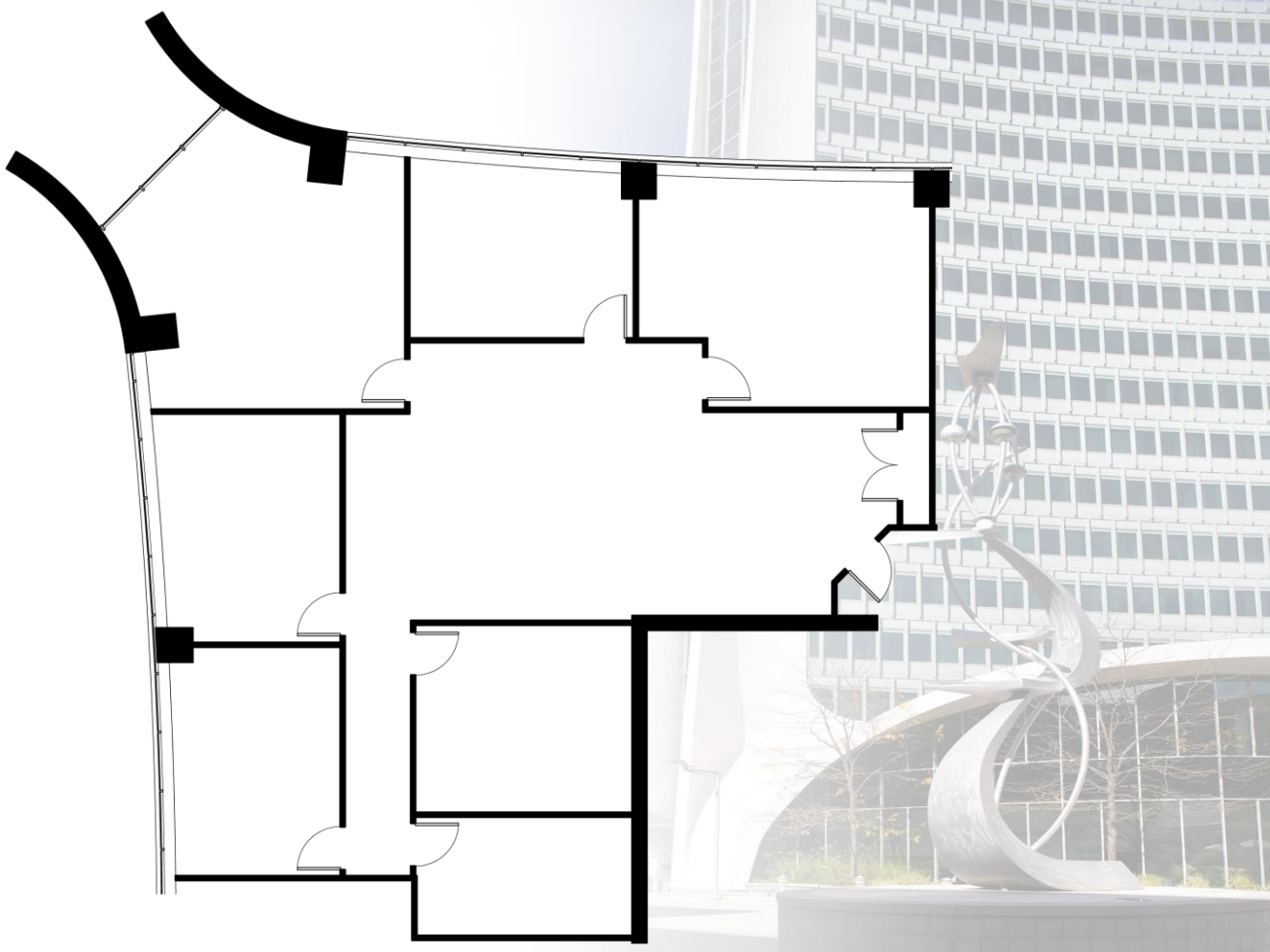
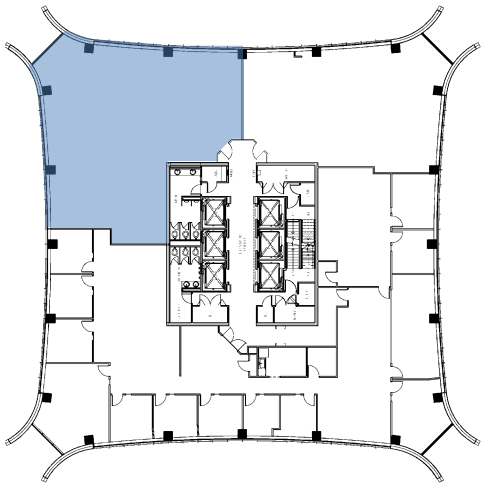
All information is from sources deemed reliable and submitted subject to errors, omissions, change of price, rental, prior sale and withdrawal without notice.

SLG  
LISTED  
NYSE

Member  
**REBNY**  
REAL ESTATE BROKERS ASSOCIATION

# 1 Landmark Square

9<sup>th</sup> Floor – 2,835 rsf  
Stamford, CT



# RECKSON

A Division of  
**SL GREEN**  
REALTY CORP.

Demanding Quality. Delivering Value.

**Larry Kwiat, Senior Vice President Leasing** | 203-363-2341 | [larry.kwiat@slgreen.com](mailto:larry.kwiat@slgreen.com)

**Robert Swierbut, Vice President Leasing** | 914-872-4744 | [robert.swierbut@slgreen.com](mailto:robert.swierbut@slgreen.com)

**Willard Overlock, Vice President Leasing** | 914-872-4729 | [willard.overlock@slgreen.com](mailto:willard.overlock@slgreen.com)

All information is from sources deemed reliable and submitted subject to errors, omissions, change of price, rental, prior sale and withdrawal without notice.

